

Technical datasheet. Efficpool HI Filters

1. General description

Efficpool HI filters are specially designed for public pools and aquatic facilities with large volumes of water. Their regenerative filtration technology using perlite provides high filtration quality, water savings, and energy efficiency.

2. Models and capacities

Table of models and capacities

| Model | CANDLES | Filtering area (m ²) | | | Flow rate depending on speed (m ³ /h/m ²) | | | | | | | | |
|---------|---------|----------------------------------|-------|-------|--|-------|-------|------------------|-------|-------|-------------------|-------|-------|
| | | | | | HPE (Lc 1000) | | | HPE -L (Lc 1300) | | | HPE -XL (Lc 1600) | | |
| | | HI | HI-L | HI-XL | V=1,3 | V=3,3 | V=4,8 | V=1,3 | V=3,3 | V=4,8 | V=1,3 | V=3,3 | V=4,8 |
| HI-450 | 73 | 7,9 | - | - | 10,3 | 26,0 | 37,9 | - | - | - | - | - | - |
| HI-600 | 139 | 15,0 | 19,5 | - | 19,5 | 49,6 | 72,1 | 25,4 | 64,4 | 93,7 | - | - | - |
| HI-800 | 254 | 27,4 | 35,7 | 43,9 | 35,7 | 90,6 | 131,7 | 46,4 | 117,7 | 171,2 | 57,1 | 144,9 | 210,8 |
| HI-1000 | 421 | 45,5 | 59,1 | 72,8 | 59,1 | 150,1 | 218,3 | 76,9 | 195,1 | 283,8 | 94,6 | 240,2 | 349,3 |
| HI-1200 | 570 | 61,6 | 80,1 | 98,5 | 80,1 | 203,2 | 295,6 | 104,1 | 264,2 | 384,3 | 128,1 | 325,2 | 473,0 |
| HI-1400 | 792 | 85,6 | 111,2 | 136,9 | 111,2 | 282,4 | 410,7 | 144,6 | 367,1 | 533,9 | 178,0 | 451,8 | 657,2 |
| HI-1600 | 1044 | 112,8 | 146,6 | 180,5 | 146,6 | 372,2 | 541,4 | 190,6 | 483,9 | 703,8 | 234,6 | 595,6 | 866,3 |

Candles ref. 36.2

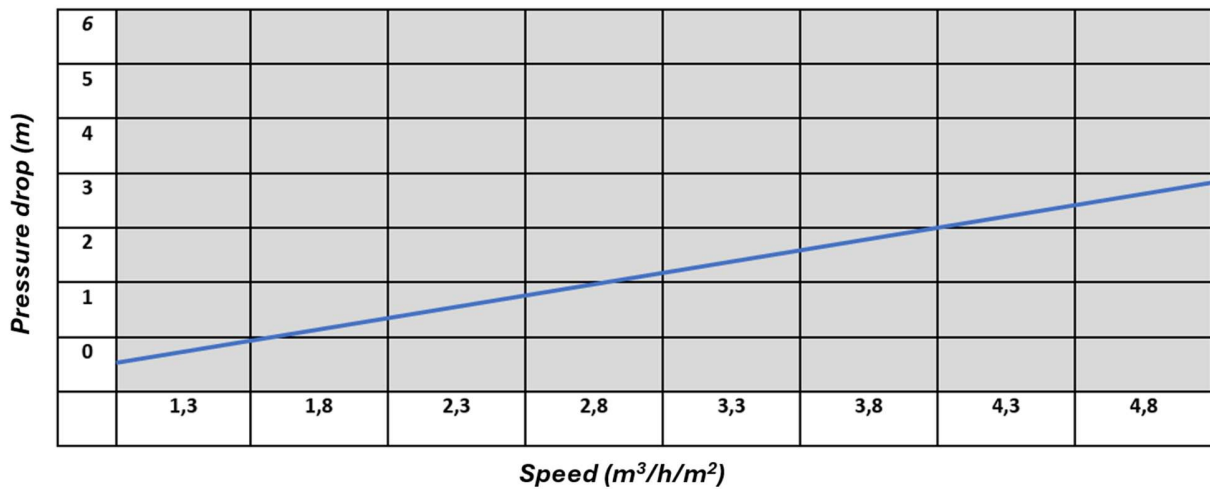
3. Technical Characteristics

Common features of all Efficpool HI models.

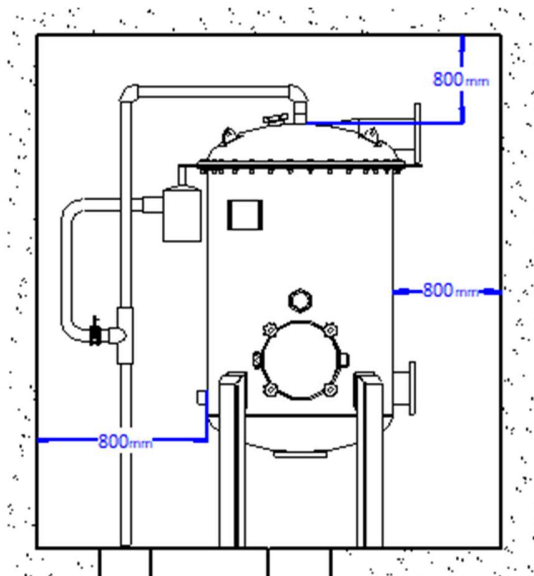
- Regenerative perlite filter, retains particles down to 1 micron.
- No backwashing required.
- Body, nozzles, and supports made of AISI-316L stainless steel.
- Removable collector plate with screws.
- Candles with threaded collectors, individually replaceable.
- Side access port Ø500 mm operable without screws from model HI800 for maintenance.
- Automatic regeneration by vibration (patented).
- Automatic collector cleaning by Vortex system (patented).
- Semi-automatic perlite loading by suction.
- Top cover with the same diameter as the filter (full access to the filter interior).
- Panel with inlet and outlet glycerin pressure gauges.
- Includes manual purge kit and perlite vacuum.
- Bottom drain valve for complete emptying.
- Filtration speed rate from 1.3 to 4.8 m³/h/m².

- Operating temperature: 1 - 50 °C.
- Working (test) pressures: until 3 (4.29) barg, optional until 5 (7.15) barg.
- Three inspection windows/viewports (candles, collector plate, and vortex access) depending on model.
- Horizontal water inlet and outlet connections.
- Electrical supply: 400V III 50Hz.
- Maximum consumption: 1.5 kWh.
- Maximum daily consumption: 0.7 kWh/day.

Pressure drop curve – Efficpool HI



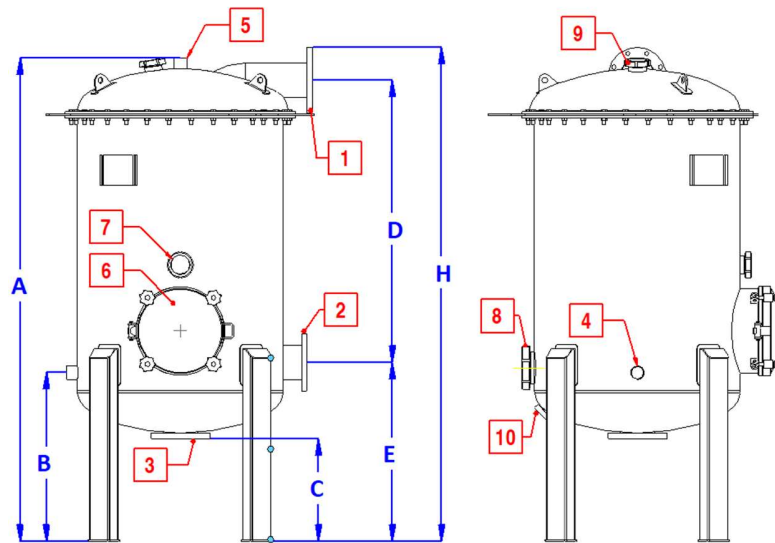
Recommended free space



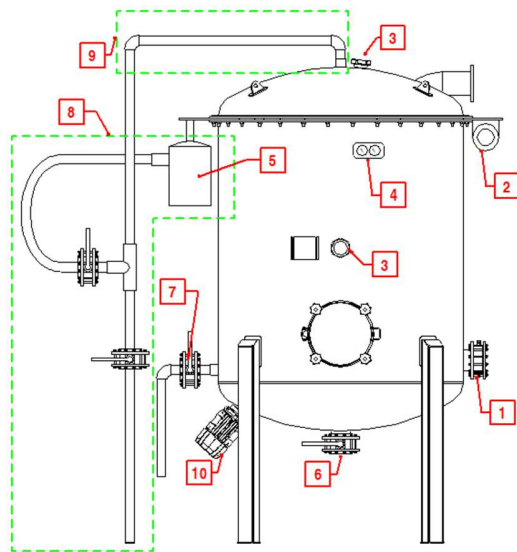
4. Connections and measurements

| MODEL | Water outlet (flange) | Water inlet (flange) | Drain (flange) | Perlite inlet (flange) | Purge (threaded) | Manhole (Access) | Filter tubes sight glass (threaded Ø) | Vortex sight glass (threaded Ø) | Collector plate sight glass (threaded Ø) |
|-----------|-----------------------|----------------------|----------------|------------------------|------------------|------------------|---------------------------------------|---------------------------------|--|
| | POS 1 | POS 2 | POS 3 | POS 4 | POS 5 | POS 6 | POS 7 | POS 8 | POS 9 |
| HI-450 | 90 | 90 | 80 | 2" RH | 2" RH | - | 80 | 150 | 80 |
| HI-600 | 110 | 110 | 80 | 2" RH | 2" RH | - | 80 | 150 | 80 |
| HI-600L | 125 | 125 | 80 | 2" RH | 2" RH | - | 80 | 150 | 80 |
| HI-800 | 160 | 160 | 100 | 2" RH | 2" RH | D.500 | 80 | 150 | 80 |
| HI-800L | 160 | 160 | 100 | 2" RH | 2" RH | D.500 | 80 | 150 | 80 |
| HI-800XL | 200 | 200 | 100 | 2" RH | 2" RH | D.500 | 80 | 150 | 80 |
| HI-1000 | 200 | 200 | 150 | 2" RH | 2" RH | D.500 | 80 | 150 | 80 |
| HI-1000L | 250 | 250 | 150 | 2" RH | 2" RH | D.500 | 80 | 150 | 80 |
| HI-1000XL | 250 | 250 | 150 | 2" RH | 2" RH | D.500 | 80 | 150 | 80 |
| HI-1200 | 250 | 250 | 200 | 2" RH | 2" RH | D.500 | 80 | 150 | 80 |
| HI-1200L | 250 | 250 | 200 | 2" RH | 2" RH | D.500 | 80 | 150 | 80 |
| HI-1200XL | 315 | 315 | 200 | 2" RH | 2" RH | D.500 | 80 | 150 | 80 |
| HI-1400 | 315 | 315 | 250 | 2" RH | 2" RH | D.500 | 80 | 150 | 80 |
| HI-1400L | 315 | 315 | 250 | 2" RH | 2" RH | D.500 | 80 | 150 | 80 |
| HI-1400XL | 315 | 315 | 250 | 2" RH | 2" RH | D.500 | 80 | 150 | 80 |
| HI-1600 | 315 | 315 | 300 | 2" RH | 2" RH | D.500 | 80 | 150 | 80 |
| HI-1600L | 315 | 315 | 300 | 2" RH | 2" RH | D.500 | 80 | 150 | 80 |
| HI-1600XL | 400 | 400 | 300 | 2" RH | 2" RH | D.500 | 80 | 150 | 80 |

| MODEL | HI-450 | HI-600 | HI-600 L | HI-800 | HI-800 L | HI-800 XL | HI-1000 | HI-1000 L | HI-1000 XL | HI-1200 | HI-1200 L | HI-1200 XL | HI-1400 | HI-1400 L | HI-1400 XL | HI-1600 | HI-1600 L | HI-1600 XL |
|-------|--------|--------|----------|--------|----------|-----------|---------|-----------|------------|---------|-----------|------------|---------|-----------|------------|---------|-----------|------------|
| (A)mm | 1820 | 1980 | 2280 | 2200 | 2500 | 2800 | 2350 | 2650 | 2950 | 2540 | 2840 | 3140 | 2730 | 3030 | 3330 | 2860 | 3160 | 3460 |
| (B)mm | 560 | 680 | 680 | 730 | 730 | 730 | 820 | 820 | 820 | 950 | 950 | 950 | 1040 | 1040 | 1040 | 1130 | 1130 | 1130 |
| (C)mm | 350 | 400 | 400 | 450 | 450 | 450 | 500 | 500 | 500 | 600 | 600 | 600 | 650 | 650 | 650 | 700 | 700 | 700 |
| (D)mm | 1175 | 1205 | 1505 | 1310 | 1610 | 1910 | 1370 | 1670 | 1970 | 1375 | 1675 | 1975 | 1415 | 1715 | 2015 | 1515 | 1815 | 2115 |
| (E)mm | 575 | 685 | 685 | 800 | 800 | 800 | 870 | 870 | 870 | 1025 | 1025 | 1025 | 1160 | 1160 | 1150 | 1260 | 1260 | 1260 |
| (H)mm | 1850 | 2000 | 2300 | 2250 | 2550 | 2850 | 2400 | 2700 | 3000 | 2600 | 2900 | 3200 | 2800 | 3100 | 3400 | 3000 | 3300 | 3600 |



5. Composition of the EFFICPOOL HI systems



| Pos. | Component |
|------|---|
| 1 | Water inlet check valve |
| 2 | Electric vibrator |
| 3 | Viewing ports |
| 4 | Pressure gauge units |
| 5 | 230 AC 1.2 kW vacuum cleaner |
| 6 | PVC water drain valve. |
| 7 | 63 mm PVC valve kit and perlite feed hose |
| 8 | Vacuum collector assembly. |
| 9 | Purge collector assembly |
| 10 | Filter tuber cleaning vortex system |

For information requests, additional documentation, prescription calculations or drawings, please contact:

info@efficpool.com

www.efficpool.com

Calle d'Ignasi Iglesias, 149, Pol. Ind. Agro-Reus

43206 REUS (TARRAGONA) SPAIN

Tel +34 931 700 052 | +34 977 333 982

Note: The information provided in this technical datasheet is for reference only, corresponds to the current product specifications, and may change without notice. The manufacturer is not responsible for misuse or errors. Please consult the updated datasheet before use.